

عالية السرعة مع لصناعة السيارات في القاطع نقاط البيع استلام الطابعة 80MM الحرارية (نموذج: OCPP-804)

المواصفات:

طريقة الطباعة	الحرارية مباشرة
حجم الحرف	ANK, 24 * 12 فونتا: FontB: 9 * 17dots
قدرة العمود:	خط / 512dots OR خط / 576dots
مجموعة الأحرف	PC347 (الكندية والفرنسية), PC863 (البرتغالية), PC860 (متعدد اللغات), PC850 (قياسي أوروبا), كاتاكانا (PC347), (السيريلية # 2) PC866, WPC1252, الشمال), وأوروبا الغربية, اليونانية, العبرية, شرق أوروبا, إيران) PC865, PC852 (Latin2), PC858, IranII, العربية, اللاتفية, PT151 (1251)
الباركود	JUPC-A / UPC-E / JAN13 (EAN13) / JAN8 (EAN8) / CODABAR / ITF / CODE39 / CODE93 / CODE128. رمز الاستجابة السريعة
سرعة الطباعة	ثانية / 260MM
تلقي العازلة	بايت 64K
فلاش NV	بايت 128K
عرض الورق	79.5 ± 0.5MM
MCBF (الحياة)	100KM
أمر طباعة	ESC / POS متوافق مع
السيطرة درج النقود	DC 12-24V / 1A
سمك الورق	0.06-0.08mm
قاطعة	السيارات كتر
ورقة لفة	79.5 ± 0.5MM * φ83mm
السطح البيني	مسلسل / مواز / USB
سائق	وين فيستا / فوز 7 / لينكس / XP فوز / فوز NT / فوز / فوز 2000 / وين ME 2003 / فوز X9
مزود الطاقة	DC24V / 2.5A
محول مدخلات الطاقة	AC 110V / 220V, 50 ~ 60HZ الإخراج: DC 24V / 2.5A
بعد	200x145x137mm
الوزن الصافي	1.56kg

□□□□□□ □□□□□□:



**80mm Thermal Receipt Printer
with Auto-Cutter**
OCP-804



Product Picture





Features

Simple but not easy

Waterproof, oil proof, dustproof



Print head life: 100km



Can print QR code



USB + Serial + LAN together
or USB, or Serial, or LAN, or Parallel



260mm/sec high printing speed



Print head life: 100km
Compatible with EPSON ESC/POS



All-round show





Application Area

Food delivery, restaurant, Traffic Citation, Logistics, Transportation, Warehouse management, Delivery, Illegal Parking Ticket, Drugstore, Price Tag, Retail/Farm



Parameter

Printing method	Direct thermal
Character size	ANK,FontA:12'24dots,FontB:9'17dots
Column capacity:	576dots/line OR 512dots/line
Character set	PC347(Standard Europe), Katakana,PC850(Multilingual), PC860(Portuguese), PC863(Canadian-French), PC865(Nordic), West Europe, Greek, Hebrew, East Europe, Iran, WPC1252, PC866(Cyrillic#2), PC852(Latin2), PC858, IranII, Latvian, Arabic, PT151(1251)
Barcode	JUPC-A/UPC-E/JAN13(EAN13)/JAN8(EAN8)/CODABAR/ITF/COD E39/CODE93/CODE128, QR code
Printing speed	260mm/sec
Receive buffer	64k bytes
NV Flash	128k bytes
Paper width	79.5±0.5mm
MCBF(life)	100km
Printing command	Compatible with ESC/POS
Cash drawer control	DC 12-24V/1A
Paper thickness	0.06-0.08mm
Cutter	Auto Cutter
Roll paper	79.5±0.5mm* 69mm

Roll paper	76.2x20.5mm φ80mm
Interface	Serial + USB + LAN
Driver	Win 9X/Win ME/Win 2000/Win 2003/Win NT/Win XP/Win Vista/win 7/Linux
Power supply	DC24V/2.5A
Power adapter input	AC 110V/220V, 50~60Hz; Output: DC 24V/2.5A
Dimension	200x145x137mm
Net Weight	1.56kg

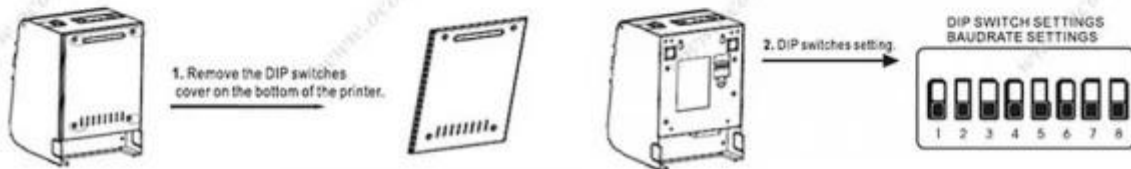
Paper Roll Installation



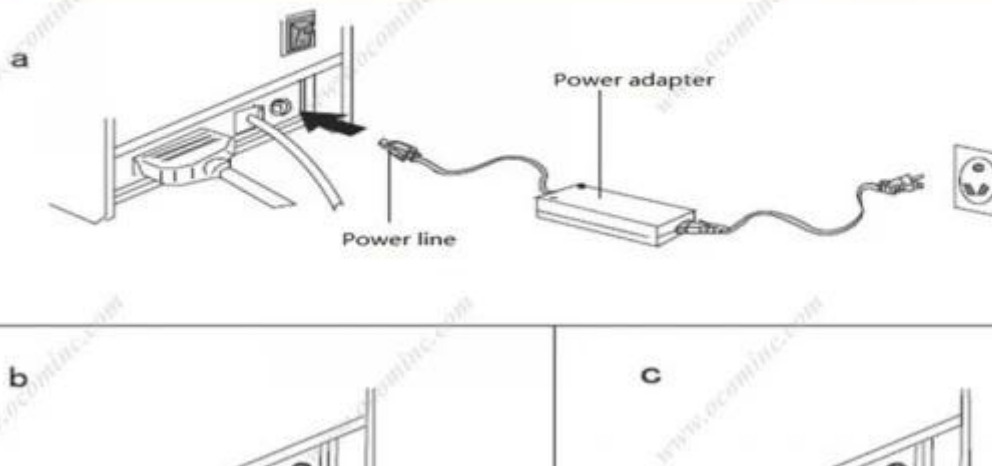
- A Open the printer cover.
- B Install the roller in the roll paper, and put them into the printer.
- C Pull out some paper outside the printer and then close the printer cover.
- D Close the top cover. Press the printer cover to avoid error position of roll paper.

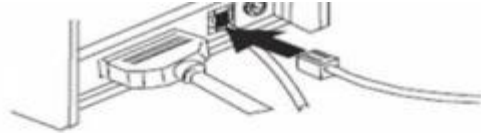
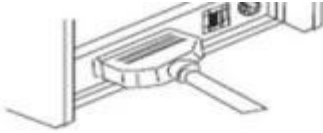
Setting the Printing Mode(DIP switches):

The DIP switches are used to set the printer to perform various functions, such as cutter mode, character set, speed, beeper, print density and etc.



Connection





- a. Plug the DC cord connector into the printer's power connector..
- b. Plug the data cable connector into the printer's interface connector.
- c. Plug the drawer cable into the drawer kick-out connector on the back of the printer next to the interface connector.

Shipping and payment

1. Air, Sea, Express(DHL, FedEx, UPS, EMS, TNT and so on)
2. EXPRESS: around 3-7 working days to arrive
3. INTERNATIONAL AIR MAIL: usually around 2-4 days to arrive, will also depend on which destination port
4. By sea: depend on which destination port
5. T/T
6. Western Union
7. Escrow
8. L/C

Company Profile



OCOM Technologies Limited is a professional supplier specialized in POS and Auto-ID applications. Our products portfolio covers Barcode Scanner, Barcode Printer, Thermal Printer, Dot Matrix Printer, Magnetic Card Reader, Data Collector, POS Terminal, and other IOT products.





We have FCC, CE, RoHS, and other certifications. We have sell our products to West Europe, North American, Africa, Asia-Pacific and other countries.

OCOM has professional teams including marketing, R&D, quality control, production and sales service. All of the sales representatives have 3 to 10 years experience in international trading, which help us to meet the customers' needs.

OCOM have been sticking to the quality system of ISO9001:2008. We conduct strict IQC, IPQC and OQC inspection in every industrial procedure. Based on our strong capacity, the normal lead time for main products is about 3 to 7 days even for bulk order.

You can find more information of us at: www.ocominc.com,

Together we quest for the best.



الوثائق ذات الصلة:

[مواصفة*](#)

[*IP](#)

[كتب التعليمات*](#)

[سائق لجميع نظام ويندوز*](#)

[برنامج تشغيل لينكس*](#)

[معلومات الطابعة أدوات إعداد*](#)

[القرص المضغوط ملفات*](#)