

# 5B8C □ 6B4C □□□□

□□□□ECD-420-X□

□□□

□□□□SECC□SPCC□  
□□□□□□□□□□  
□□12V -24V□□□□  
3□□□  
□□□□□□  
5B8C□6B4C□□□□  
□□□□□□□□□□□□  
□□□□□□□□□□□□□□  
□□□□□□□□□□□□□□

□□□

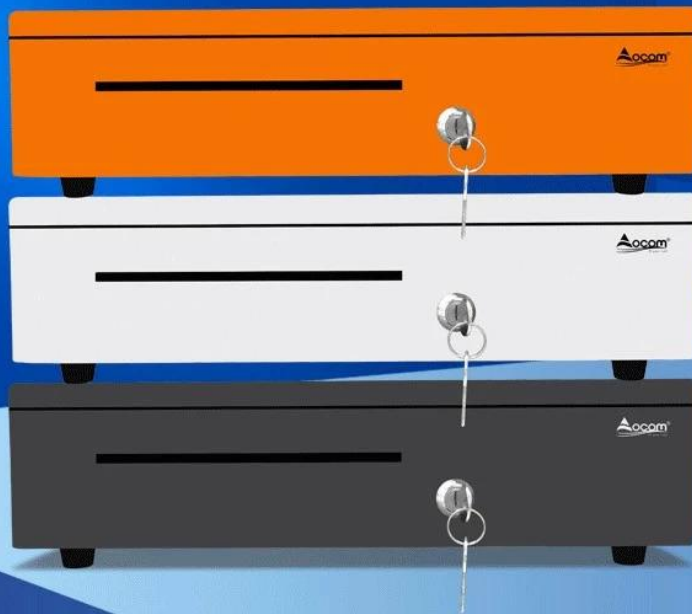
□□	□□□□0.8mm SPCC□□□□□1.0mm SECC
□□□□	5bill □ 6bill□5B8C □□□6B4C □□□
□□	80/73/73/73/68mm
□□□□	8□□□□4□□□
□	3□□□□□□□&□□□&□□□
□□	12V-24V□□□
□□□	□□□□
□□	□□□□□□□□□□□□
□□	RJ11 □ RJ12□RJ12 □□□□□□□□□□□□
□□	□□□
□□	4.5 □□□□□□□5.2 □□□□□□
□□	405(D) x 420(W) x 100mm(H)□□□10mm□
□□□□	480□□□X465□D□X 160□□□

# Cash Drawer Factory

## Electronic Metal Cash Drawer

15 Years Experience

OEM/ODM



5 or 6 Adjustable  
Bill Holders



8 or 4 Removable  
Coins Holders



Smooth Guide



Scratch Resistant Texture  
Powder Coat

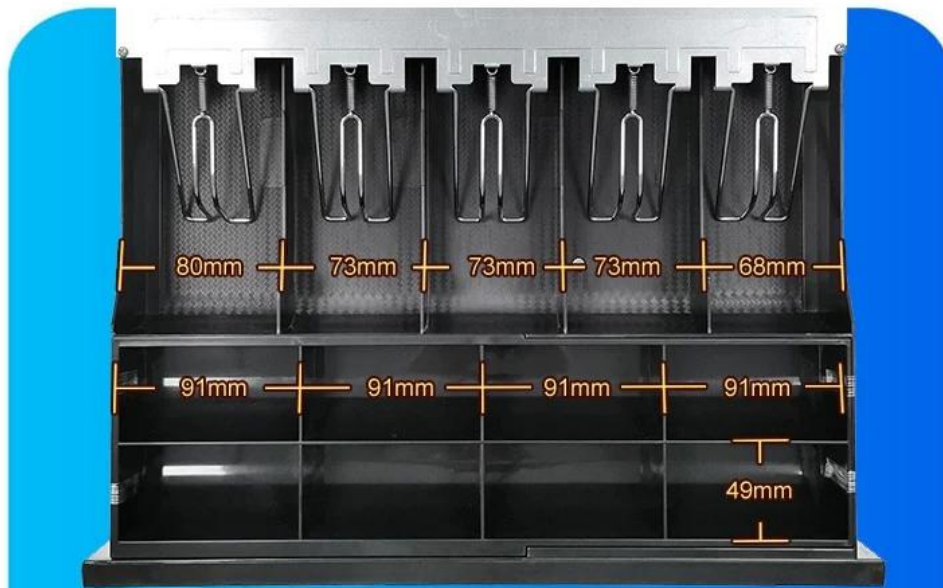


A Media Slot



3-position Locks

# Details Show



USD



EUR



GBP

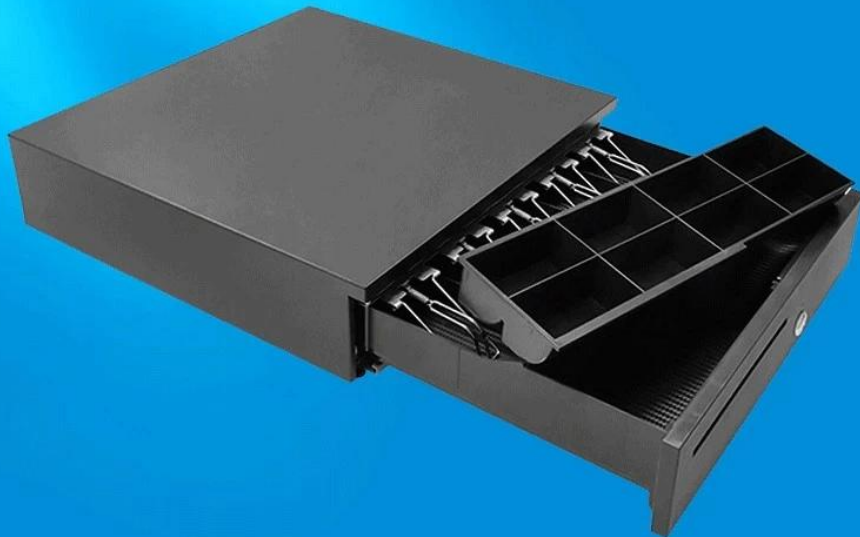


RMB

5 or 6 adjustable Bill holders and 8 or 4 removable Coins holders to suit different currencies such as Euro, US dollar, British pound, RMB, ect.

# Removable Coins Tray

The cash drawer has a removable coin tray. The removable coin tray can be taken out separately for easy counting.



A media slot on the front panel for quick storage of large bill, checks, receipts and cards without opening drawer.

# Over 1 Million Lifecycles

Tested to over 1 million opening/closing cycles, ensure smooth opening and closing.



# Secured With 3-Position Key Lock

Manual open, Electrically open, Locked



## Multiple Operation Method

### Method 1

The cash drawer is used independently, turn the key, and the drawer will automatically pop open. Push the drawer to close automatically.



### Method 2

Connect to a receipt printer to use. When the cashier prints the receipt, the cash box can be automatically opened.

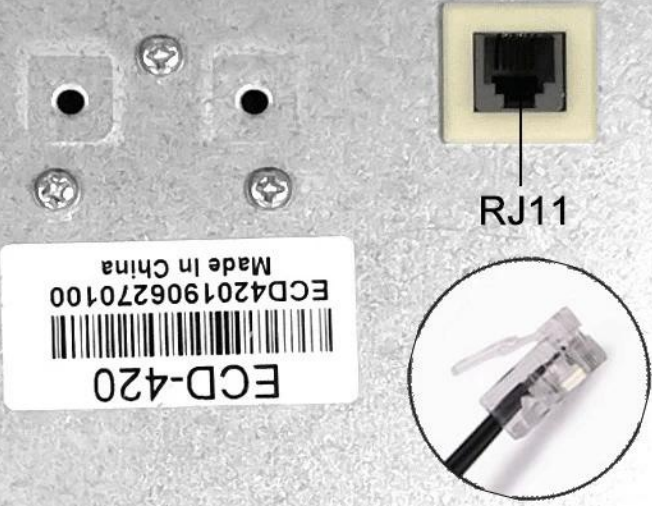


### Method 3

Connect to computer to use. Need to buy a USB Trigger, set the relevant driver ports and hotkeys.



A removable cable interface at the bottom make it easy to replace the cable without disassembling the bottom plate.



# Strong Construction Design

The load-bearing capacity exceeds 60KG. Cash drawer can bear heavy weight without any deformation even after long-term use.



## CUSTOM PROJECT

A central image of a black cash drawer is surrounded by four callout boxes. The top-left box features a rainbow circle icon and the text 'Custom Colors'. The top-right box shows a stack of three cash drawers in different colors (orange, white, black). The bottom-right box features the 'Acom' logo and the text 'Silk Printing Brand Design/LOGO'. The bottom-left box features a cardboard box icon and the text 'Custom Packaging'.

**Custom Colors**

**Acom®**  
All your safe

**Silk Printing  
Brand Design/LOGO**

**Custom Packaging**

**Just provide your country or demand,  
and we will introduce you the product model that suits you**

# Application



Bar



Restaurant



Coffee Store



Mile Tea Store



Bakery



Convenience Store



Library



Supermarket



# FACTORY STRENGTH

## Raw Materials And Semi-FG Products



## Production Processing Equipment



## FG Warehouse



## Deliver The Shipment



