

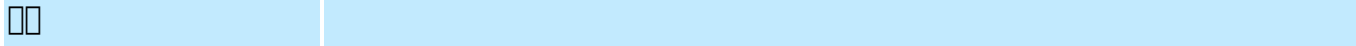
**POS-T2** NFC pos 4G 58

POS-T2)



MT6797 Tri-Cluste-A72\*2A53\*8 2.3GHz  
 58mm  
 3GB RAM 16G ROM  
 NFC  
 2\*SIM  
 USB type-C  
 6400mAh

POS-T2  
 5.5  
 3.8/6400  
 100-240V, 50/60Hz, 1.5A  
 5V DC /2A  
 USB type C



5.5

□□□	1280*720
□□□	
□□□□□	□□MT6797 Tri-Cluste-A72*2A53*8 2.3GHz□□□
RAM	3GB
ROM	16GB □□
□□	2G/3G/4G
□□□□	□□8.0
□□	□□□□□□□□□□
□□	□□4.0
WIFI	□□□□ 802.11 b.g.n.ac
□□□	58mm □□□□□□□
□□	□□□58mm□□□□≤40mm
□□□	□□□□□ □□□□□□□□□□
NFC	□□ISO/IEC 14443A&B□Mifare□felica□
SIM□□	SIM*2
□□□	□□□□□□
□□	□□□□□□
GPS □ AGPS	□□GPS□AGPS
□□□□□	□□
□□□□	□□
	USB type C*1
□□	□□□□□*1
	□□□□□*1

□□	
□□□□	0 □ 40 □□□
□□□□	-10 □ 60 □□□
□□□□	10%~80%
□□□□	10%~90%

# Smart Handheld

5.5 full touch screen / High Speed / Large paper bin

4G Handheld



DDINTING

# Thermal / Label Printing



Speed printing:80mm/s



Paper width:58m

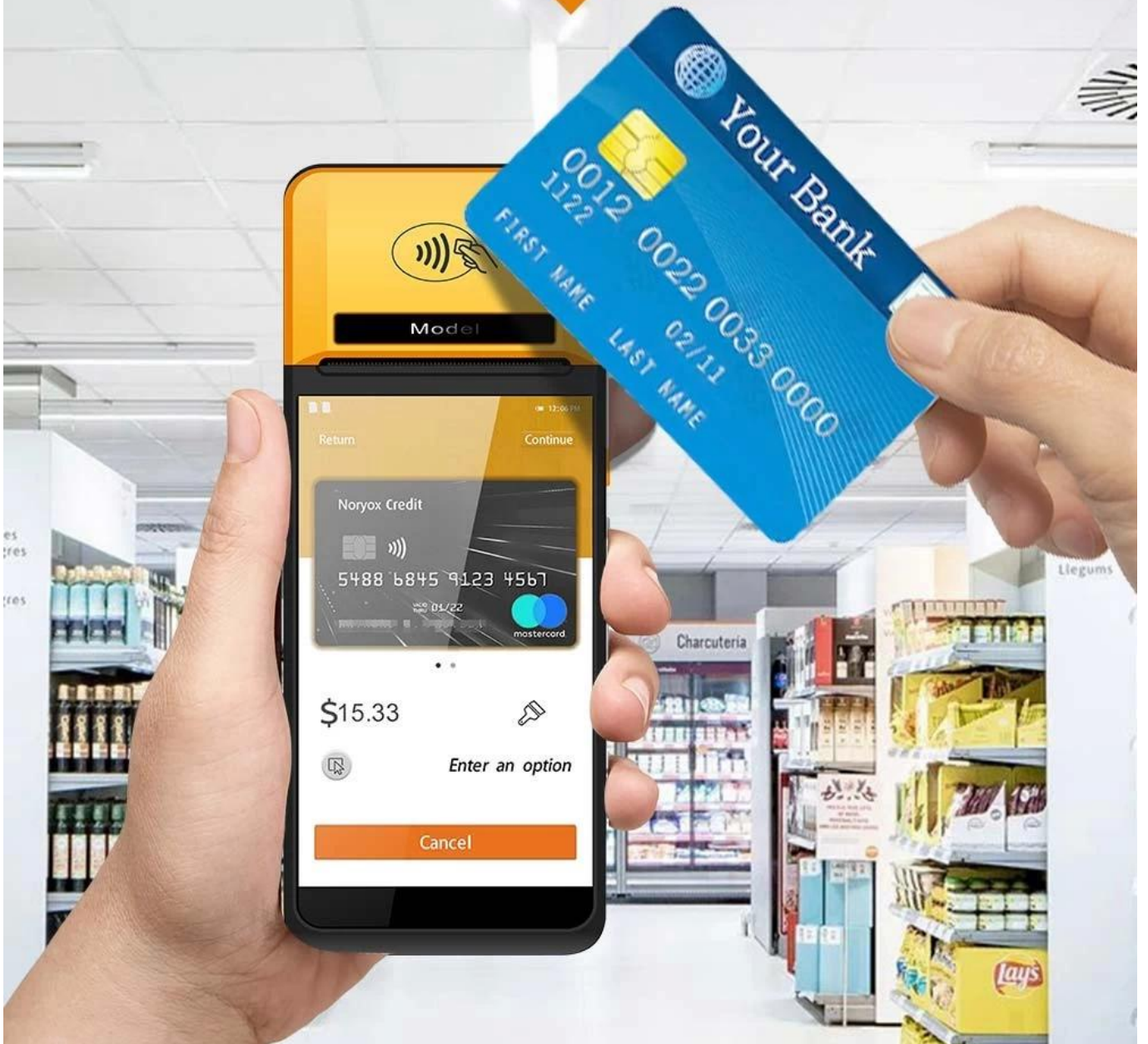
# One-click Scan

Environmental Camera + Infrared Scanning Head



# NFC Contactless Card

NFC contactless card reader payment function



# Quickly Identify QR Codes

5MP Autofocus Camera



# Fingerprint Security

Ministry of Public Security or FBI fingerprints (Optional)





# BATTEDV Large Removable Battery



3.8V / 6400mAh



# Built-in MDM

Product built-in MDM control system



# Product Details



# Applicable Scene

Powerful functions such as mobile cashier, receipt printing, pin storage, queuing, billing, label printing, QR code collection, NFC membership management, infrared physical temperature measurement, etc.



Supermarket Cashier



Catering



Convenience Store



Clothing Store



Purchase and Sale



Parking System



Temperature Measurement



Queuing Up

