

80mm Auto Cutter POS Thermal Receipt Printer  
(Model: OCPP-806)

**Specificatie:**

|                                      |   |
|--------------------------------------|---|
| Printing Methode                     | Direct Thermal  |
| Printing Karakter                    | 576 punten / lijn, 512 punten / lijn, ANK tekens                                      |
| Lettertype                           | A: 12 * 24dots, 1.5 (W) * 3,0 (H) mm;<br>B: 9 * 17dots, 1.1 (W) * 2.1 (H) mm          |
| Vereenvoudigd / Traditioneel Chinees | 24 * 24dots, 3.0 (W) * 3,0 (H) mm   |
| Barcode Type                         | UPC-A / UPC-E / JAN13 (EAN13) / JAN8 (EAN8) CODABAR / ITF / CODE39 / Code93 / CODE128 |
| Afdruksnelheid                       | 300mm / sec   |
| Interface                            | Serieel + USB + Ethernet  |
| Printing Command                     | Compatibel met ESC / POS  |
| Drivers                              | Win9X / Win2000 // Win2003 / Win Vista / Win 7 / Windows XP / compatibel met ESPON    |
| Afdrukbreedte                        | 79,5 ± 0,5 mm (printbreedte 72mm)   |
| Papier Diameter                      | 83mm  |
| Papier dikte                         | 0.06-0.08mm   |
| Cutter                               | Autosnijder   |
| Printing Betrouwbaarheid             | 100km   |
| Vermogen                             | DC24V / 2.5A  |
| Temperatuur                          | 0-45 graden   |
| Contrast Vochtigheid                 | 10-80%  |
| Externe dimensie                     | 195D * 155W * 148h mm   |
| Bruto Gewicht                        | 2.70kg  |
| Pakket                               | Binnenste doos: 29 * 21 * 17cm; Grootte van het karton (8 stuks): 60 * 44 * 36 (cm)   |

**Meer informatie:**



**80mm Thermal Receipt  
Printer with auto-cutter  
OCPP-806**



**Product Picture**





## Features

### *Simple but not easy*

Water-proof and grease-proof.



Support NV image downloading and printing  
Support different density bitmap graphics printing



Support raster bitmap printing

USB+Serial +Ethernet



High Printing Speed  
(Max 260mm/second)  
Auto Cutter Optional

Characters can be amplified, printed in bold optionally, and line spacing printing can be adjusted



## All-round show





## Application Area

Food delivery, restaurant, Traffic Citation, Logistics,  
Transportation, Warehouse management, Delivery, Illegal  
Parking Ticket, Drugstore, Price Tag, Retail/Farm



## Paper Roll Installation



- A Open the printer cover.
- B Install the roller in the roll paper, and put them into the printer.
- C Pull out some paper outside the printer and then close the printer cover.
- D Close the top cover. Press the printer cover to avoid error position of roll paper.
- E Tear-off the paper correctly.

---

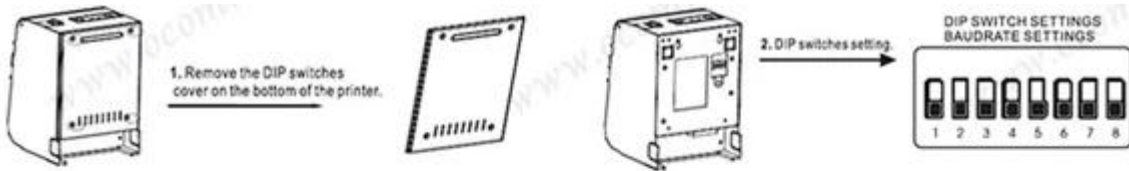
### Setting the Printing Mode(DIP switches):

The DIP switches are used to set the printer to perform various functions, such as cutter mode, character set, speed, beeper, print density and etc.

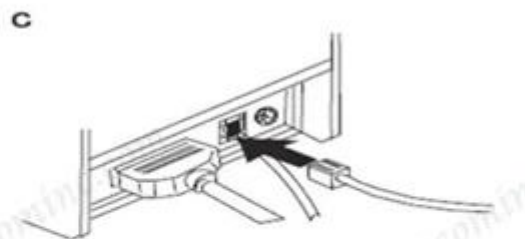
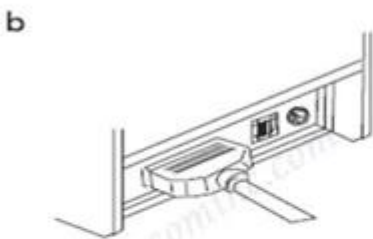
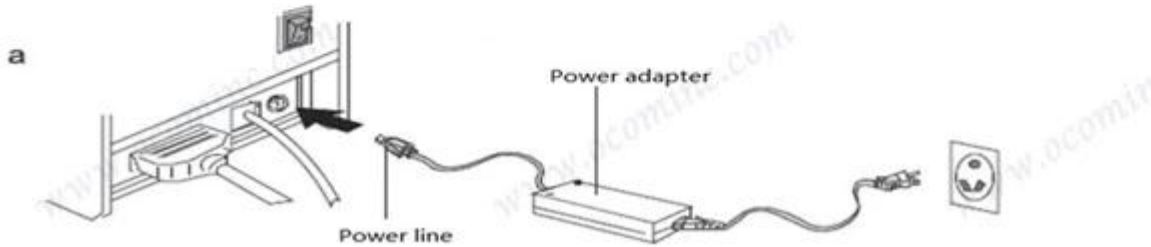
## Parameter

|                                |  |
|--------------------------------|--|
| Printing Method                | Direct Thermal   |
| Printing Character             | 576 dots/line, 512 dots/line, ANK characters                                       |
| Font                           | A: 12*24dots, 1.5(W)*3.0(H)mm;<br>B: 9*17dots, 1.1(W)*2.1(H)mm                     |
| Simplified/Traditional Chinese | 24*24dots, 3.0(W)*3.0(H)mm   |
| Barcode Type                   | UPC-A/UPC-E/JAN13(EAN13)/JAN8(EAN8)CODABAR/ITF/CODE E39/CODE93/CODE128             |
| Printing Speed                 | 300mm/sec  |
| Interface                      | Parallel or Serial + USB + Ethernet  |
| Printing Command               | Compatible with ESC/POS  |
| Drivers                        | Win9X/Win2000/Win2003/Win Vista/ Win 7/Window XP /, compatible with ESPON, SAMSUNG |
| Printing Width                 | 79.5±0.5mm( print width 72mm)  |
| Paper Diameter                 | 83mm   |
| Paper Thickness                | 0.06-0.08mm  |
| Cutter                         | Auto cutter  |
| Printing Reliability           | 100km  |
| Power                          | DC24V/2.5A   |
| Temperature                    | 0-45 degree  |
| Contrast Humidity              | 10-80%   |
| External Dimension             | 195D*155W*148H mm  |
| Gross Weight                   | 2.70kg   |
| Package                        | Inner Box: 29*21*17cm; Carton Size (8 pcs): 60*44*36(cm)                           |





## Connection



- a. Plug the DC cord connector into the printer's power connector..
- b. Plug the data cable connector into the printer's interface connector.
- C. Plug the drawer cable into the drawer kick-out connector on the back of the printer next to the interface connector.

You can find more information of us at: [www.ocorning.com](http://www.ocorning.com),  
Together we quest for the best.



## Shipping and payment

1. Air, Sea, Express(DHL, FedEx, UPS, EMS, TNT and so on)
2. EXPRESS: around 3-7 working days to arrive
3. INTERNATIONAL AIR MAIL: usually around 2-4 days to arrive, will also depend on which destination port
4. By sea: depend on which destination port
5. T/T
6. Western Union
7. Escrow
8. L/C

## Company Profile



OCOM Technologies Limited is a professional supplier specialized in POS and Auto-ID applications. Our products portfolio covers Barcode Scanner, Barcode Printer, Thermal Printer, Dot Matrix Printer, Magnetic Card Reader, Data Collector, POS Terminal, and other IOT products.



We have FCC, CE, RoHS, and other certifications. We have sell our products to West Europe, North American, Africa, Asia-Pacific and other countries.

OCOM has professional teams including marketing, R&D, quality control, production and sales service. All of the sales representatives have 3 to 10 years experience in international trading, which help us to meet the customers' needs.

OCOM have been sticking to the quality system of ISO9001:2008. We conduct strict IQC, IPQC and OQC inspection in every industrial procedure. Based on our strong capacity, the normal lead time for main products is about 3 to 7 days even for bulk order.

For more information of our products, please visit our website: [www.ocom.com.cn](http://www.ocom.com.cn)