

ECD-410H OCOM Restaurant Economical Cash Drawer

(Model No.: ECD-410H)

Features:

1. 4 or 5 adjustable Bill holders
2. 8 removable Coins holders
3. Scratch resistant texture powder coat
4. High impact ABS plastic
5. 12V or 24V for options
6. 3-position locks
7. Two check ports
8. Metal drawer and detachable plastic tray structure
9. Tested to last beyond 1.5 million operations

Specifications:

Material	Flip top: 0.8mm SPCC powder spray the surface of cold rolled plate
	Bottom: 1.0mm SECC
Bill tray	Four position width: 85/84/84/85mm
	Five position width:72/63/63/65/70mm
	Length:186mm; Depth: 55mm
Coin tray	8 removable position width: 82; Length: 57; Depth: 46
lock	3 locks
Power	12V / 24V for option
Lifetime	Tested to minimum 1.5 million cycles
Interface	RJ11 or RJ12(RJ12 port for Micro Switch)
Color	Black or White
weight	7 kg (net), 7.5kg (gross)
Dimensions	410(W) x 420(L) x 113mm(H) (with feet of 13mm)



ECD-410H



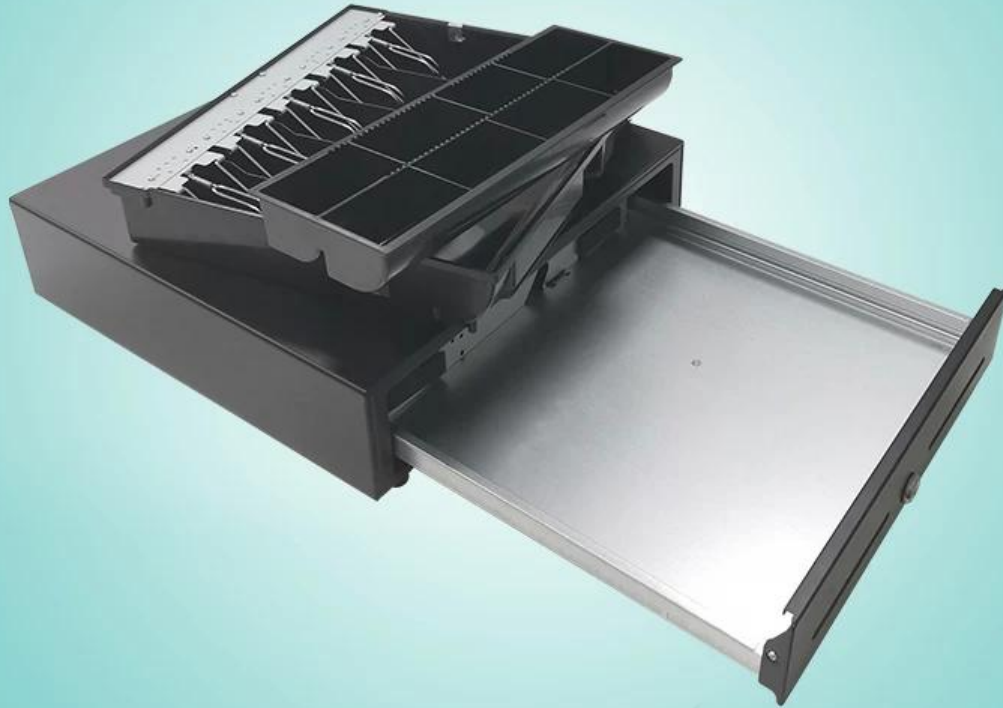


ECD-410H





ECD-410H





FAQ

1. MOQ policy

No MOQ limitation for the standard products, but the unit price is different, bigger quantity better price. For customized production, you can discuss the MOQ with our sales representative directly.

2. Sample Availability & Policy

After customers confirmed the specification, we are very glad to provide samples for testing and qualification.

All samples should be paid before shipment, the samples price is a higher than mass order.

When the mass order placed, we can return you the samples cost, or send you more piece products with the shipments.

You can buy the samples from us directly using t/t, western union, or paypal. And you can also buy it on our online store.

3. Warranty

OCOM is dedicated to providing most cost-effective products and services with reliable quality that will meet customers' satisfaction;

We were qualified by Global Fortune 500 company, and we have the top 1 level trade assurance which 100% protects your money and lead time.

Our warranty of the products is about 12+1 months from the shipment normally, some designated models can have as long as 24 months warranty;

Any product within 30 days of delivery failure occurs shall be deemed invalid delivery (DOA). DOA products will give priority to the replacement, and shipped by courier.

For mass order, we would like to supply some spare parts with shipment for local quick repair. And after that, you can return failure parts for rework and analysis.

4. Payment Terms

For mass order, you can pay us by using T/T, LC, Western Union, Escrow or others. About samples order, T/T, Western Union, Escrow, Paypal are acceptable. Escrow Service is powered by Alipay.com. Currently, you can pay using Moneybookers, Visa,

MasterCard and bank transfer. You can also pay with select debit cards including Maestro, Solo, Carte Bleue, PostePay, CartaSi, 4B and Euro6000.

5. Shipment

We accept all kinds of shipping ways including: express, air, sea, truck, or pick up by customers personally.

Why You Choose Us

Leading One-Stop POS and Auto-ID Related Products Supplier Qualified by Global Fortune 500 Companies
Tier 1 customers including Unilever, O2, Star...

2600+ Customers Cover 163 Countries;

12 Years OEM/ODM Experience.

Top 1 Level Trade Assurance in POS industrial guarantee quality and shipment date

Fast responses and professional service

ISO, CE, FCC, Soncap, POA, BIS, and other Certificates

12+1 months warranty.

Shortlisted in "China Best Employer Award"

Belief: Integrity Based, Strive for Excellence, Win-win Cooperation