

## 5.0-inch handheld Android 7.1 POS terminal with EMV certification (M / N: POS -Z90)

### feature:

- Android 7.1 operating system;
- 5.0 inch screen touch;
- Long standby battery capacity is 2800 mAh;
- 58 mm thermal printer;
- 5 megapixel camera;
- 2G / 3G / 4G wifi, Bluetooth communication;
- Integrated magnetic card reader, inductive IC card reader and contact IC card reader;
- Passed EMV L1 L2, PCI and PBOC bank payment certification.

### application:

Apply chain supermarket, restaurant, convenience store, clothing store, shop, bakery, cashier, payment, enter sales to save business management functions.

### Technical Specification:

Basic Information	
operating system	Android 7.1
RAM	RAM: 1GB
Extended storage	FLASH: 8GB
Display	5.0 inches
touch screen	Capacitive touch screen, supporting electronics signature
battery	Lithium battery 2800 mAh, 7.4 volts
Bluetooth	Bluetooth 4.0
camera	5 megapixel camera
Positioning function	GPS AGPS WLAN for Positioning
printer	58mm thermal printer diameter 30mm paper roll
interface	Micro USB
POS function	
Magnetic card reader	Full-track magnetic card reader Support ISO1788 / 7812, AAMVA protocol
IC card reading and writing	Support ISO7816 protocol
Contactless card reader	Support ISO / IEC 14443 A & B, Mifare, felica Card, in line with EMV / PBOC PAYPASS specification
PSAM card	Bank secure payment chip card
prove	UnionPay card acceptance terminal network detection EMV / PBOC3.0 L1 and L2 certification EMV / qPBOC3.0 L1 and L2 certification UnionPay intelligent security standard point of sale terminal
Network parameters	
Network Type	GSM, WCDMA, TD-SCDMA, FDD-LTE, TDD-LTE
Network spectrum	GSM850 / 900/1800/1900
	WCDMA2100 / 1900 / 900/850
	TD-SCDMA B34 / B39
	FDD-LTE B1 / B2 / B3 / B4 / B5 / B7 / B8 / B20
	TDD-LTE B38 / B39 / B40 / B41
WLAN	IEEE802.11.b / N / G
Physical parameter	
size	191 mm × 80 mm × 46 mm
weight	650 grams
Operating temperature	-20 ° C ~ 60 ° C
Storage temperature	-40°C~80°C
humidity	10%~90% RH without condensation



There are four card slots

Standard Configuration

- TF Slot \*1
- SAM Slot \*1
- SIM Slot \*2

or

Optional

- TF Slot \*1
- SAM Slot \*2
- SIM Slot \*1



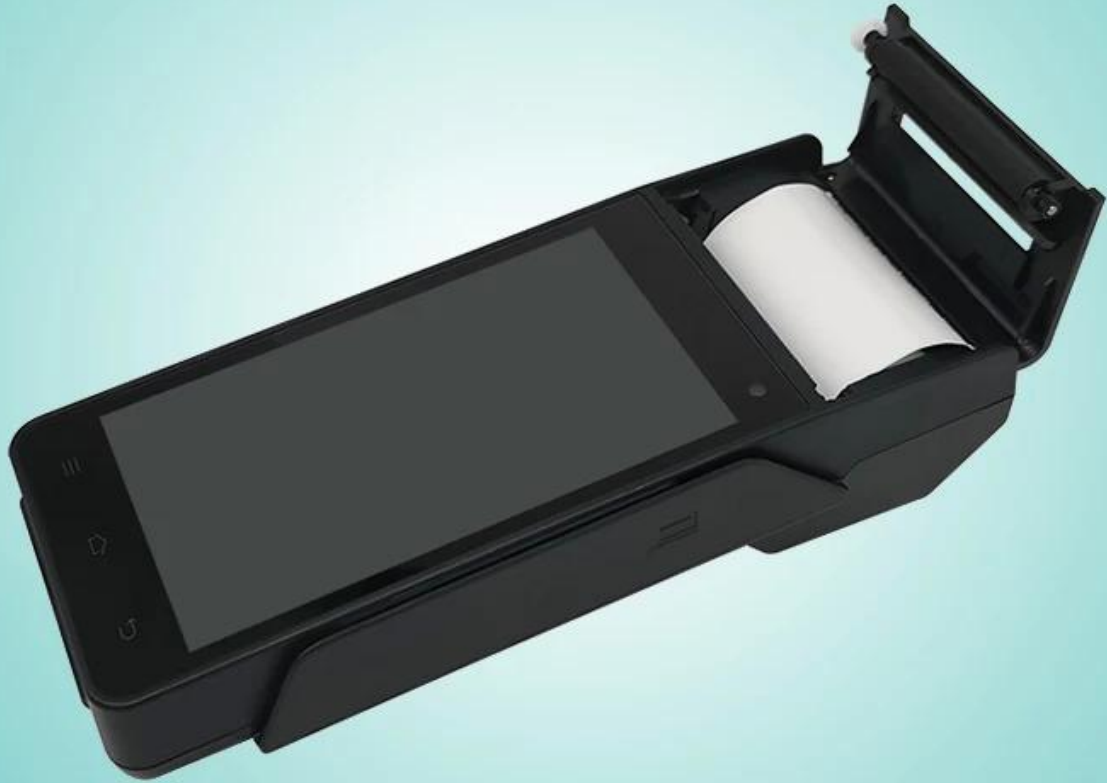
# POS-Z90







# POS-Z90





POS-Z90















Relevant documents:

[POS-Z90 SPEC](#)

[POS-Z90 SDK](#)