

## Gaveta de dinheiro eletrônico 5B8C ou 6B4C

(Nº do modelo: ECD-420-X)

### Características:

A casca é feita de SECC e SPCC;  
Revestimento em pó híbrido texturizado;  
Compatível com tensão larga de 12V -24V;  
Fechaduras de 3 posições;  
Um slot de cheque;  
5B8C ou 6B4C para opcional;  
Sensor de microinterruptor para opcional;  
Saída inferior para deixar a área de trabalho mais arrumada;  
Fio conectável para fácil manutenção.

### Especificações:

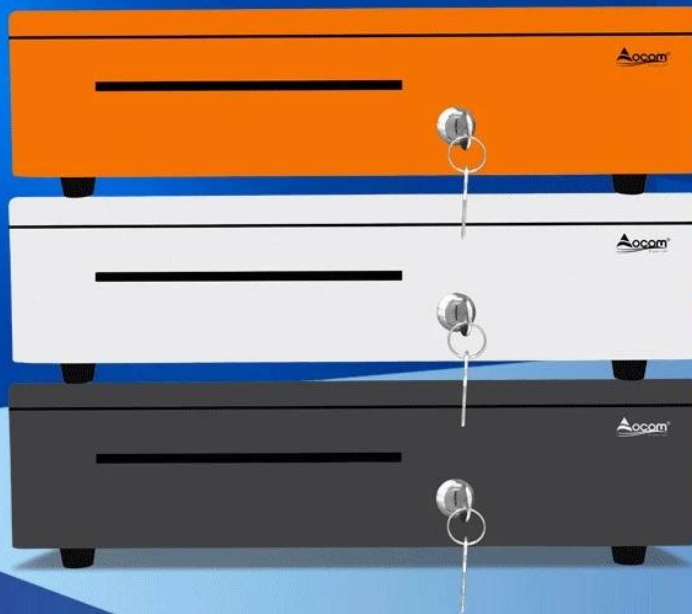
Materiais	A tampa superior usa 0,8 mm SPCC, a tampa inferior usa 1,0 mm SECC	
bandeja de contas	5bill ou 6bill (5B8C Standard, 6B4C para opcional)	
Largura	80/73/73/73/68mm	
bandeja de moedas	8moeda ou 4coin	
trancar	3 posições bloqueios (Bloqueado e pode ser acionado e aberto)	
Poder	Tensão larga de 12V- 24V	
Slot	Slot de cheque único	
Vida	Testado para um mínimo de um milhão de ciclos	
Interface	RJ11 ou RJ12 (RJ12 para função de sensor de microinterruptor)	
Cor	Preto ou branco	
peso	4,5 kg (líquido), 5,2 kg (bruto)	
Dimensões	405(P) x 420(L) x 100mm(A) (com pés de 10mm)	
Dimensões da Caixa	480□L□X465□P□X 160□A□	

# Cash Drawer Factory

## Electronic Metal Cash Drawer

15 Years Experience

OEM/ODM



5 or 6 Adjustable  
Bill Holders



8 or 4 Removable  
Coins Holders



Smooth Guide



Scratch Resistant Texture  
Powder Coat

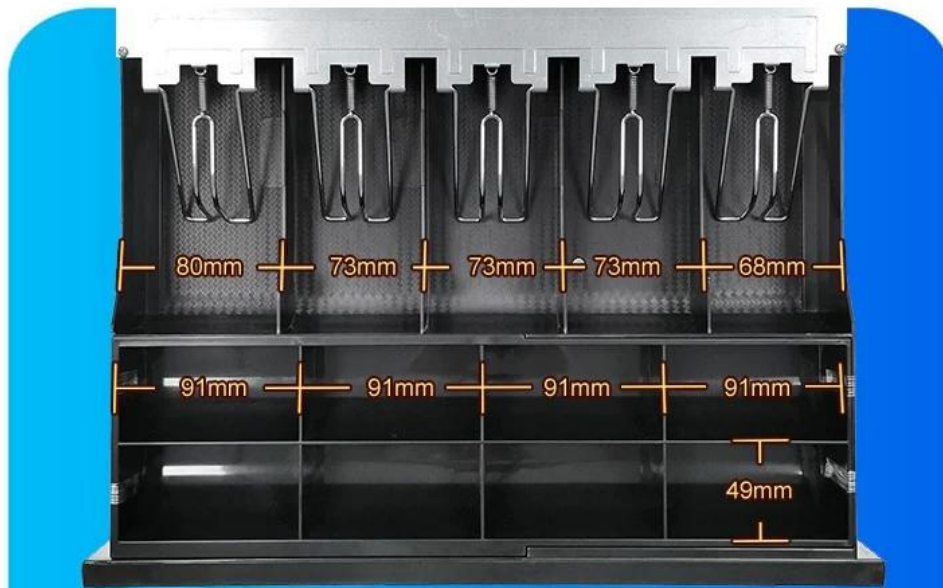


A Media Slot



3-position Locks

# Details Show



USD



EUR



GBP

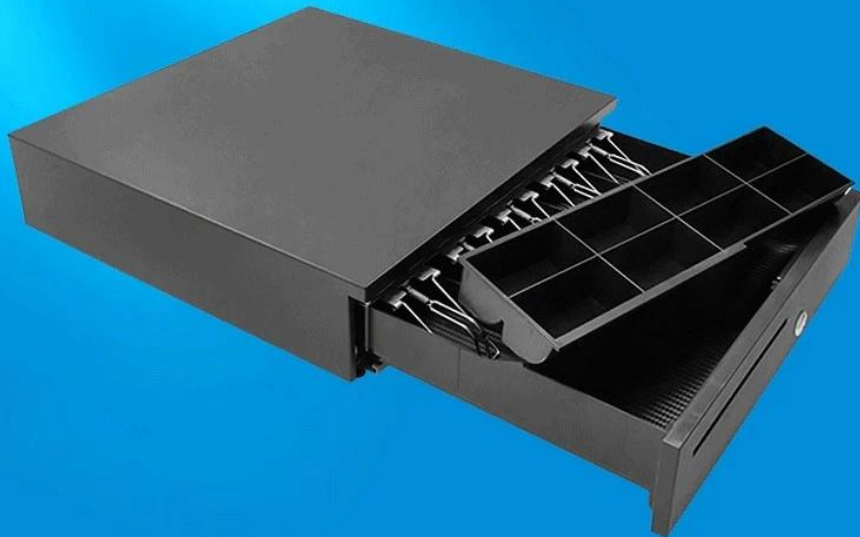


RMB

5 or 6 adjustable Bill holders and 8 or 4 removable Coins holders to suit different currencies such as Euro, US dollar, British pound, RMB, ect.

# Removable Coins Tray

The cash drawer has a removable coin tray. The removable coin tray can be taken out separately for easy counting.



A media slot on the front panel for quick storage of large bill, checks, receipts and cards without opening drawer.

# Over 1 Million Lifecycles

Tested to over 1 million opening/closing cycles, ensure smooth opening and closing.



# Secured With 3-Position Key Lock

Manual open, Electrically open, Locked



## Multiple Operation Method

### Method 1

The cash drawer is used independently, turn the key, and the drawer will automatically pop open. Push the drawer to close automatically.



### Method 2

Connect to a receipt printer to use. When the cashier prints the receipt, the cash box can be automatically opened.

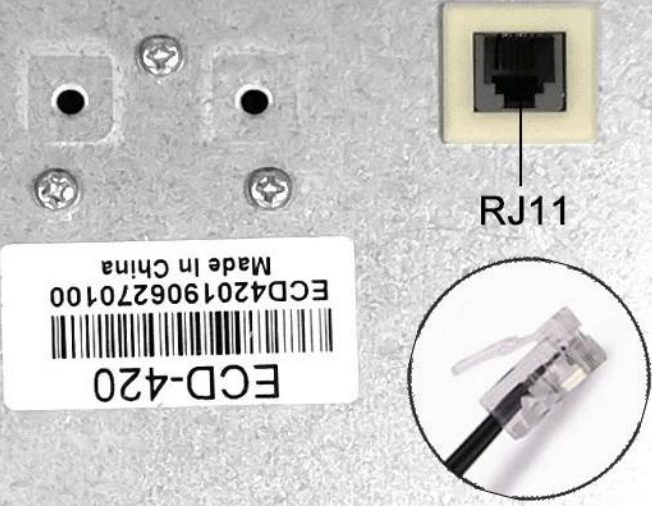


### Method 3

Connect to computer to use. Need to buy a USB Trigger, set the relevant driver ports and hotkeys.



A removable cable interface at the bottom make it easy to replace the cable without disassembling the bottom plate.



RJ11



# Strong Construction Design

The load-bearing capacity exceeds 60KG. Cash drawer can bear heavy weight without any deformation even after long-term use.



## CUSTOM PROJECT

A central image of a black cash drawer is surrounded by four callout boxes. Top-left: 'Custom Colors' with a rainbow circle icon and a small image of a multi-colored cash drawer. Top-right: 'Silk Printing Brand Design/LOGO' with the 'Acom' logo. Bottom-left: 'Custom Packaging' with a small image of a cardboard box. Bottom-right: A small image of a cardboard box labeled 'CASH DRAWER'.

**Custom Colors**

**Acom®**  
All your safe

**Silk Printing  
Brand Design/LOGO**

**Custom Packaging**

**Just provide your country or demand,  
and we will introduce you the product model that suits you**

# Application



Bar



Restaurant



Coffee Store



Mile Tea Store



Bakery



Convenience Store



Library



Supermarket



# FACTORY STRENGTH

## Raw Materials And Semi-FG Products



## Production Processing Equipment



## FG Warehouse



## Deliver The Shipment



